



OPTEO

DIGITAL IMAGING MADE SIMPLE
USB DIRECT INTRAORAL SENSOR

3rd generation

OPTEO

THE OPTIMUM
MEDICAL IMAGING DEVICE
FOR YOUR DAILY PRACTICE



Ultra HD Image Quality

Experience unparalleled clarity with the **new 3rd-generation Opteo sensor**, featuring 18.5-micron Ultra HD quality. This advanced sensor delivers **exceptionall sharp and detailed intraoral images** for a perfect quality diagnostic.



THE CONCENTRATION OF TECHNOLOGY MAKES INTRA-ORAL IMAGING EVEN EASIER



Endodontics



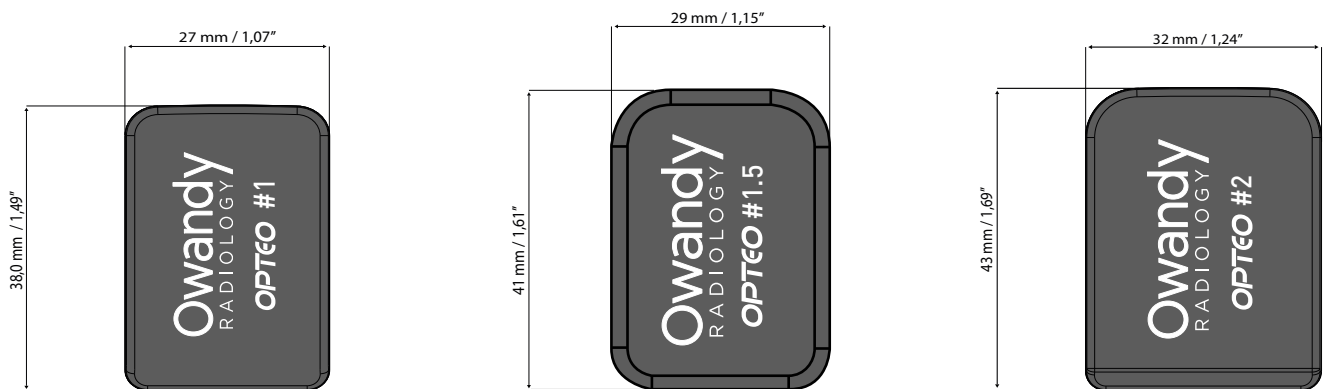
Prosthetic and
implant surgery



Periodontics



Caries diagnosis



New & More Suitable Size

The versatile sensor size 1.5 comes to complement existing sensor sizes 1 and 2 and acquires images with a larger area, improving diagnostic capabilities. The ability to use the sensor in a horizontal position makes it easier to acquire up to 4 teeth on an image.



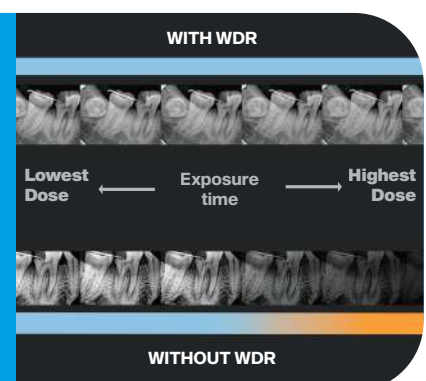
«Always On» Technology

Experience enhanced user comfort with our innovative «Always On» technology. This feature ensures your Opteo sensor is ready for use instantly, eliminating warm-up time and providing a seamless workflow. With «Always On,» capture high-quality intraoral images without interruption, making your diagnostic process smoother and more reliable.



New Technology: *Wide Dynamic Range*

Our new WDR (Wide Dynamic Range) technology significantly enhances image sharpness and ensures consistently accurate shots, regardless of exposure levels. Whether the user sends too much or too little x-ray, WDR adapts to deliver optimal image quality every time.





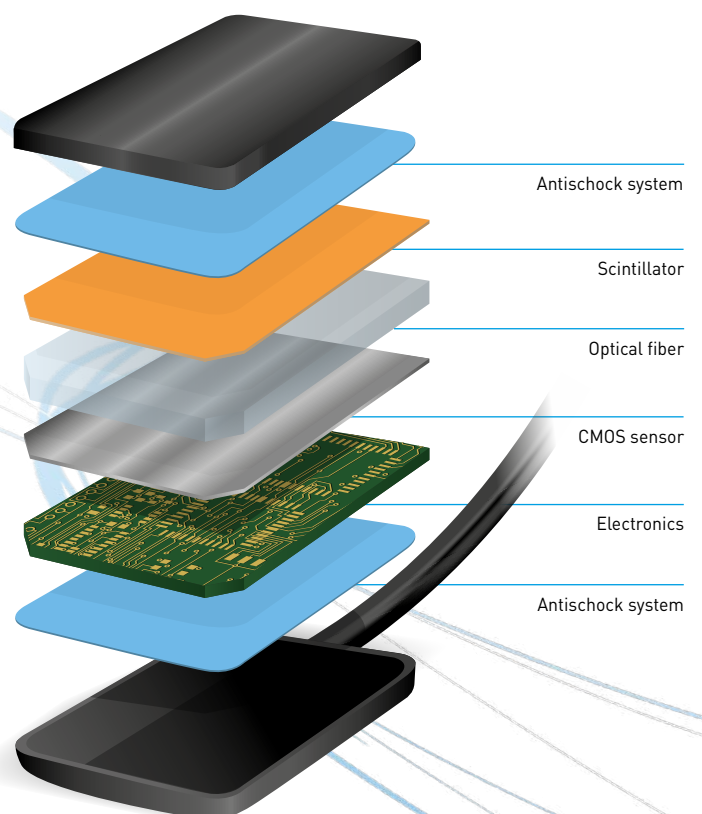
Simple & automatic

Say goodbye to cumbersome boxes. The Opteo's direct USB connection makes its use **simple and intuitive**, whether you're operating a single station or multiple stations. This streamlined setup **reduces clutter and enhances workspace efficiency**, allowing you to focus on what matters most: **delivering exceptional patient care**. With the Opteo, you can seamlessly integrate high-quality intraoral imaging into your practice, ensuring a smooth and reliable diagnostic process.



Reliable & robust

The Opteo sensor marries very high image resolution with **increased equipment reliability**. It includes a CMOS chip, fibre optics, scintillator and a shock absorption system.



TECHNICAL FEATURES

	Size 1	Size 1,5	Size 2
Sensor	CMOS		
Fiber Optic Plate	Yes		
Scintillator	Csl :Tl		
Sensitive surface	0.866 x 1.181 inch (1.023 inch²)	0.945 x 1.299 inch (1.224 inch²)	1.024 x 1.378 inch (1.410 inch²)
Pixel Size	18,5 x 18,5 µm		
Sensor resolution	685.8 lp/inch		
Connetion	Direct USB: High-Speed USB 2.0 and USB 3.0		
Operation System	Windows 10/11		



**Atraumatic
& ergonomic**



Simple & automatic



High-definition & precision



**Fully adapted to all
your clinical practices**



Reliable & robust

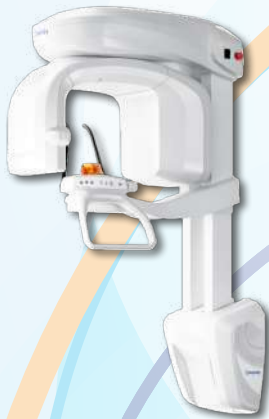
DIGITAL WORKFLOW OWANDY RADIOLOGY

A COMPREHENSIVE RANGE TO MEET ALL YOUR REQUIREMENTS

**CEPHALOMETRIC
UNITS**



2D/3D UNITS



**HF-INTRAORAL
GENERATOR**



**INTRAORAL PLAQUE
SCANNER**



**EXPORT TO
3D PRINTER**



**SURGICAL
GUIDE**



**DIRECT USB
SENSORS**



**DIGITAL USB
INTRAORAL CAMERA**



**3D INTRAORAL
SCANNER**



**FACE SCAN
.PLY IMPORT**

