



**OWANDY-RX** PORTABLE

LESS WEIGHT FOR BETTER IMAGES

PORTABLE DENTAL X-RAY SYSTEM

# OWANDY-RX PORTABLE

## SUPER HIGH IMAGE QUALITY

Exceptional high image resolution  
thanks to its 0.3mm focal spot

## EASY TO USE

Quickly take images by applying  
patient and teeth preset values

## LIGHT & COMPACT

Can be used with  
only one hand

## POWERFUL BATTERY

Scan up to 300 times  
with only one charge

## POWERFUL CURRENT

Excellent image quality  
thank to 3mA anode current

## WIRELESS CHARGING

Simply charge Owandy-RX Portable  
by placing it on the cradle





### USER FRIENDLY

Parameters are displayed in a simple way **to facilitate use**: battery level, type of examination and patient, X-ray emission, kV, mA... You can also configure **Owandy-RX Portable** according to your needs thanks to the "MEMO" function.



### LIGHTWEIGHT

Weighing 3,96 lbs, **Owandy-RX Portable** is one of the lightest X-ray devices on the market. It is therefore easy to handle and to position.



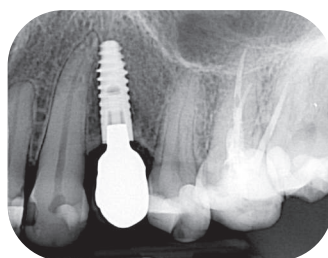
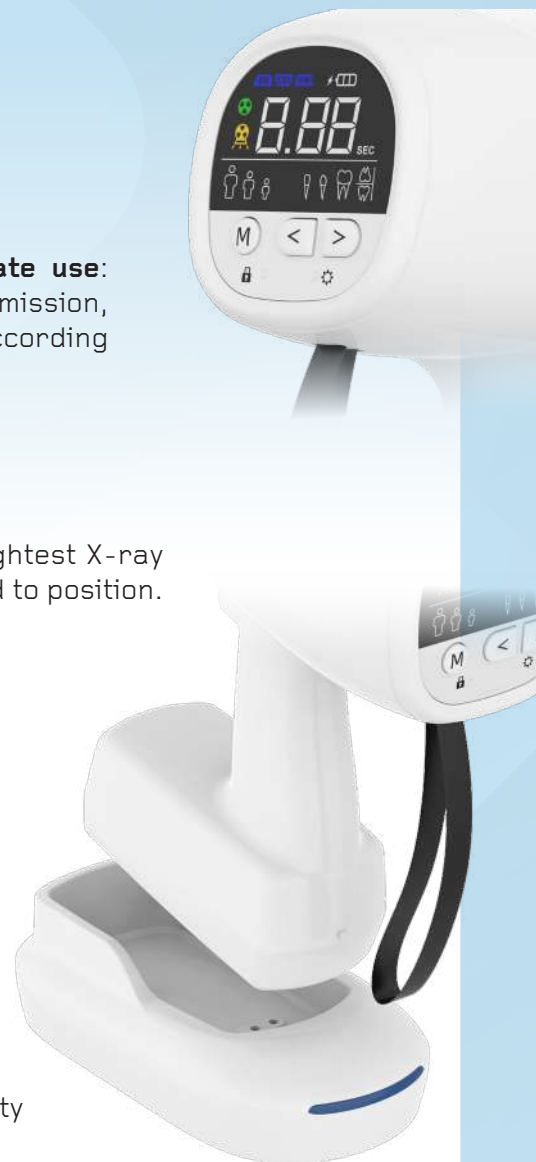
### LONG BATTERY LIFE

With one charge, you can shoot up to **300 images**!



### HIGH DEFINITION IMAGES

Thanks to its **0.3mm focal spot**, you will obtain high quality images, both with sensor and plates.



## Technical features

X-ray tube	CEI
kV/mA	70kV / 3mA
Focal spot	0.3 mm
Total filtration	1.5mm Al
Battery charger input voltage	100-240V / 50~60Hz
Battery voltage	24.2V
Weight	3,96 lbs
Options	Backscatter protection Rectangular collimator (1,18x1,57 inch, 0,78x1,18 inch)

# DIGITAL WORKFLOW OWANDY RADIOLOGY

A COMPREHENSIVE RANGE TO MEET ALL YOUR REQUIREMENTS

## CEPHALOMETRIC UNITS

## 2D/3D UNITS

## HF-INTRAORAL GENERATOR

## INTRAORAL PLAQUE SCANNER

## EXPORT TO 3D PRINTER

## SURGICAL GUIDE

## DIRECT USB SENSORS

## 3D INTRAORAL SCANNER

## FACE SCAN .PLY IMPORT

